

FAX MODEM

Quick Installation Guide

Table of Contents

Itroduction

Features	4
System Requirements	4
Package Checklist	4

Installation

Hardware Installation	5
Installation Procedure for Windows XP	6
Installation Procedure for Windows 2000.....	10
Installation Procedure for Windows ME	12
Installation Procedure for Windows 98SE	15

Modem Dialing Location

For WIN 2000/XP 20 For WINME/98SE.....	16
--	----

FOR AUSTRALIA USER

WARNING

- * Unit shall be connected to the Telecommunications Network through line cord, which meets the requirements of AS/ACIFS008.
- * This card must be used with the PC screw down lid.
- * Telecommunications network voltages exist inside the PC and Telecommunication line connection shall be removed before opening the cover.
- * For safety reasons, only connect equipment with a Telecommunications compliance label. This includes customer equipment previously labelled permitted or certified.
- * Disconnect from telephone line before opening the PC cover.

CAUTION

- * Only connect Australian approved equipment to the Telecommunications Network Voltage circuit ports.

Introduction

Features

This modem supports the following communication standards. ITU-T is also known as CCITT.

Data

V.92 (Lite)

V.90, V.34, V.32bis, V.32, V.22bis, V.21, V.22

Bell 103 & 212A

V.44, V.42bis & MNP 5 (Data compression)

V.42 & MNP2-4 (Error correction)

Fax

V.17

V.29

V.27 ter

Voice

Voice/Audio mode

Software Speakerphone (optional)

Minimum System Requirements

Windows 98SE/win 2000/win ME/Win XP

Pentium MMX 233 up

Sound Card

Package Checklist

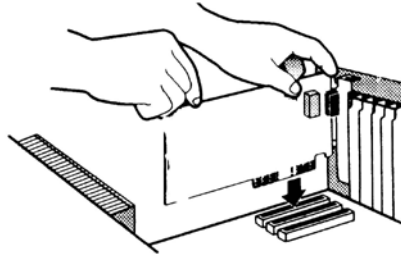
One Fax Modem/ One Phone cable

One CD Driver/ User's manual on CD

Installation

Hardware Installation

With the power to your PC disconnected, remove the PC's casing. Press the modem card firmly into the PCI slot, and secure it with screws to your PC. Reinstall the casing on your PC.



Phone : Phone jack



Line : Telephone line jack

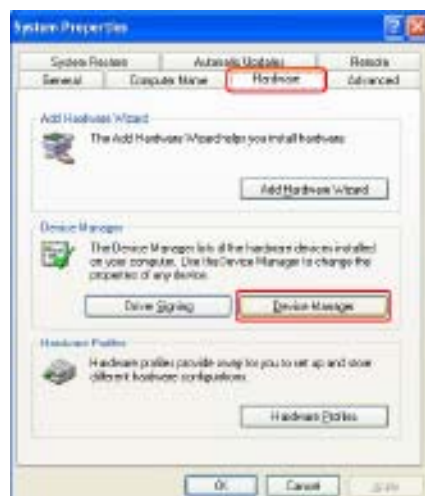
Installation

Installation Procedure for Windows XP

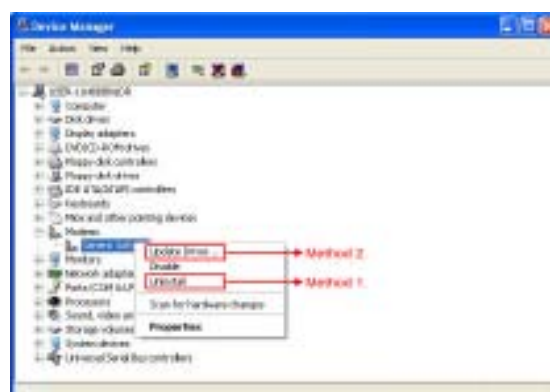
1. Once you have completed the hardware installation, switch on your computer and put the CD into the CD-ROM.
2. Please click Control Panel ->Click System.



3. Under System Properties select Hardware->Click Device Manager, click OK.



4. Click Modems->Click right button on Generic Softk56 Modem (Optional) and select: (method 1 or 2 below).



Method 1. Install

1.1 Confirm Device Removal, click OK.



1.2 Run (CD-ROM)

e.g., D:\Driver\WINXP\HXFSETUP (It will install automatically)

*Please wait until the windows show the message Found

New Hardware your new Device is ready to use.

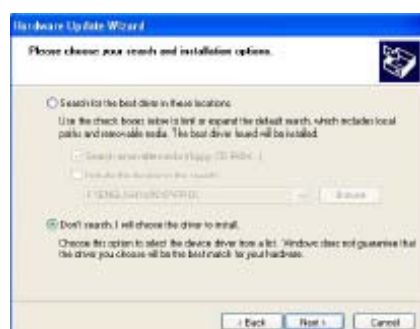


Method 2. Update Driver

2.1 The wizard will search for new hardware. Select install from a list or specific location (Advanced). Click Next.



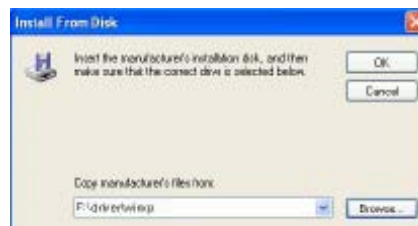
2.2 Select Don't search. I will choose the driver to install and click Next.



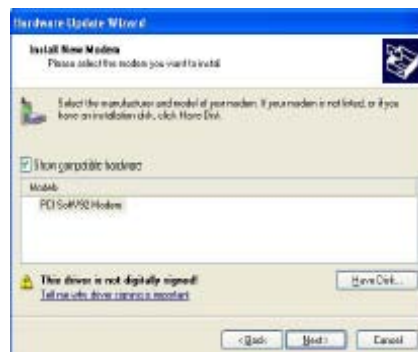
2.3 Install new modem, please click Have Disk.



2.4-1 Click Browse to search for driver files and open it. e.g., (CD-ROM) D:\Driver\WINXP. Than Click OK



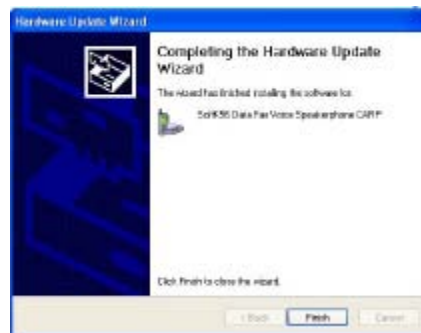
2.4-2 Click Next.



2.5 Click Continue Anyway



2.6 Click Finish



Installation

Installation Procedure for Windows 2000

1. Once you have completed the hardware installation, switch on your computer and put the CD into the CD-ROM. The wizard will search for new hardware. Click Next.



2. Select Search for a suitable driver for my device (recommended) and click Next.



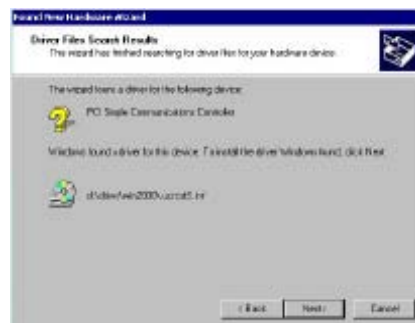
3. Select Specify a location and click Next.



4. Click Browse to search for driver files and open it. e.g., (CD-ROM) D:\Driver\WIN2000. Click OK.



5. Windows found the driver of this modem. Click Next.



6. Click Yes for Digital Signature.



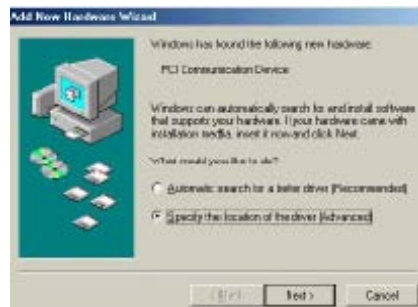
7. Click Finish to complete the installation.



Installation

Installation Procedure for Windows ME

1. Once you have completed the hardware installation, switch on your computer and put the CD into the CD-ROM. The wizard will search for new hardware. Select Specify the location of the driver (Advanced) and click Next.



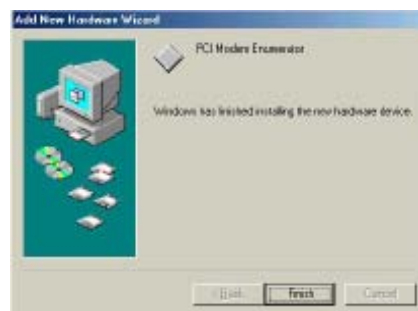
2. Select Search for the best driver for your device (Recommended) and Specify a location. Click Browse to search for driver files and open it. e.g., (CD-ROM) D:\Driver\WinMe. Click OK then click Next.



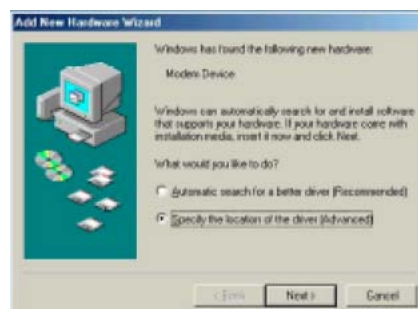
3. Windows found the driver of this modem. Click Next.



4. Click Finish to complete the installation.



5. Windows has found the new hardware for Modem Device, please click Next.



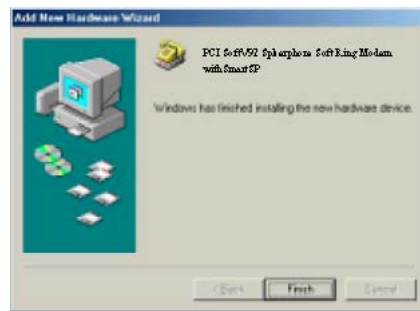
6. Select Search for the best driver for your device (Recommended) and Specify a location. (Please click Browse to search for driver files and open it. e.g., D:\Driver\WinMe) and click Next.



7. Windows found the driver of this modem. Click Next.



8. Click Finish to complete the installation.



Installation

Installation Procedure for Windows 98SE

1. Once you have completed the hardware installation, put the CD into the CD-ROM. The wizard searches for new hardware. Click Cancel.



2. Run CD-ROM e.g., D:\Driver\Win98SE\HXFSETUP. EXE (it will install).

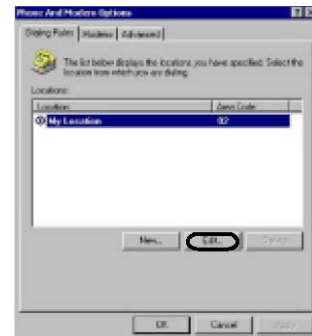


Modem Dialing Location

****If you want to change your dialing location, please follow the instructions and samples:**

For WIN 2000/XP

Please click Control Panel->Phone And Modem Options
->Under Dialing Rules click Edit, and then you can change your location.



For WIN ME/98SE

Please click Control Panel->Modems->Under General click Dialing Properties, and then you can change your location.

